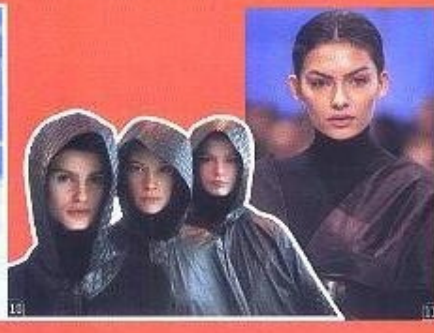
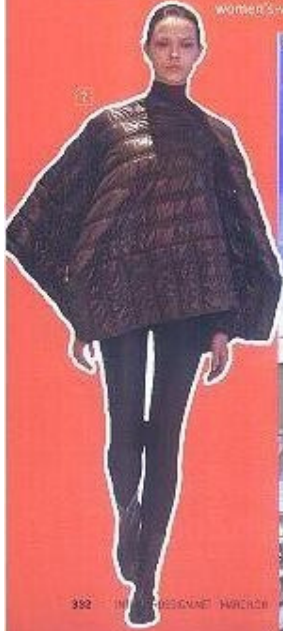


INTERIOR DESIGN

MARCH 2008

the architecture of fashion

How would Shakers dress to visit a building designed by the edgy architecture firm SANAA? The answer might just be found in the Yeohlee women's-wear label's intriguing fall 2008 show, held at the New Museum of Contemporary Art in New York.



7. A quilted nylon cube-cover.
8. Designer **Yeohlee Teng** taking her bow.
9. A quilted nylon-polyester hexagon skirt.
10. Hooded capelet coats in nylon-poly.
11. Silk taffeta as a tunic.
12. The calm before the storm in the Sky Room at SANAA's New Museum.